

# 24/00407/CONDIT

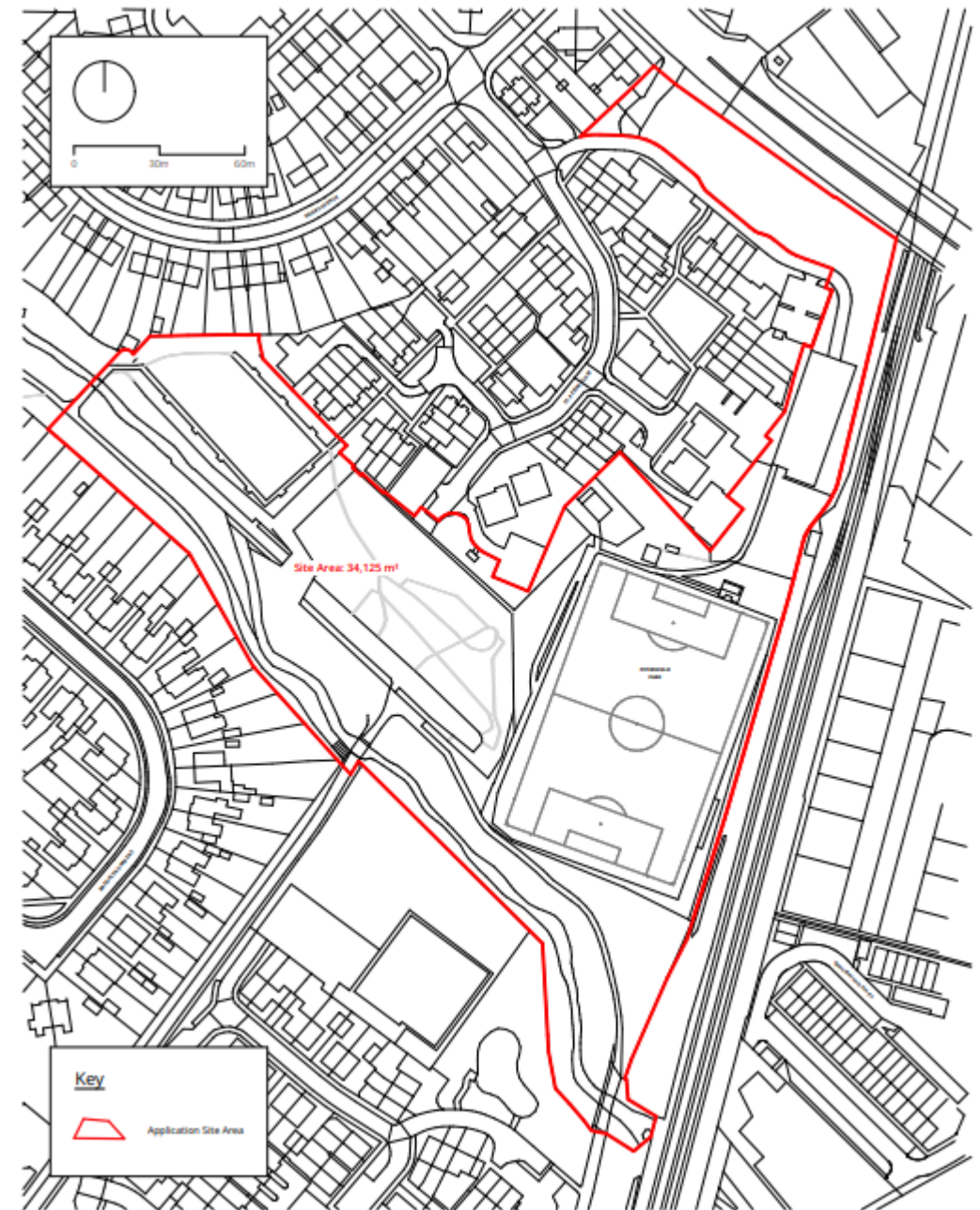
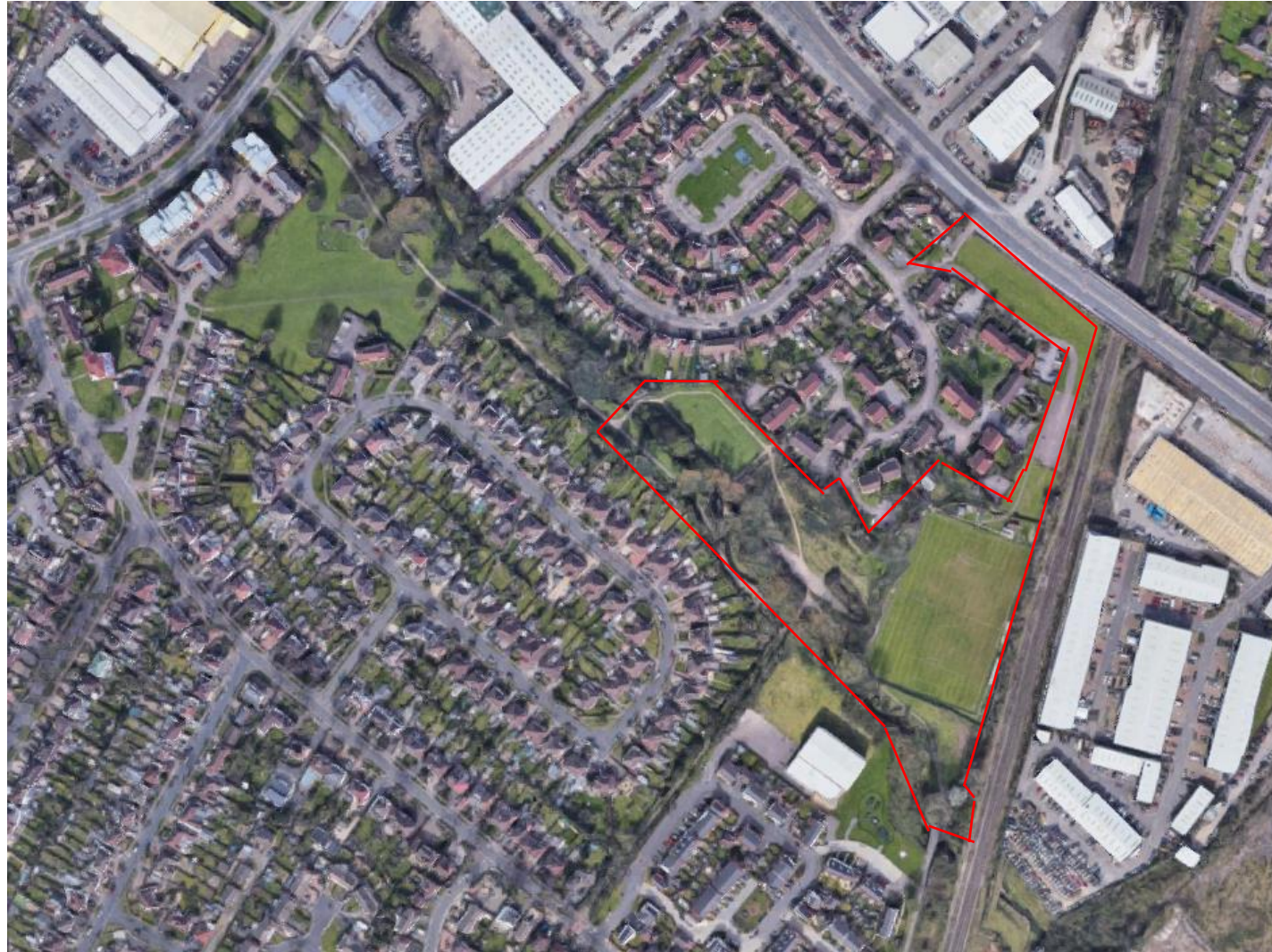
## St Peters Playing Field, St Peters Close

Variation of condition 2 (approved drawings) to make alterations to the design of the Community Sports Hub Building; and removal of condition 3 (material samples), condition 4 (green roof details), condition 5 (construction management plan) and condition 6 (SuDS) of planning permission ref. 22/01743/FUL

The application is at planning committee as the applicant is the Council

Recommendation to permit

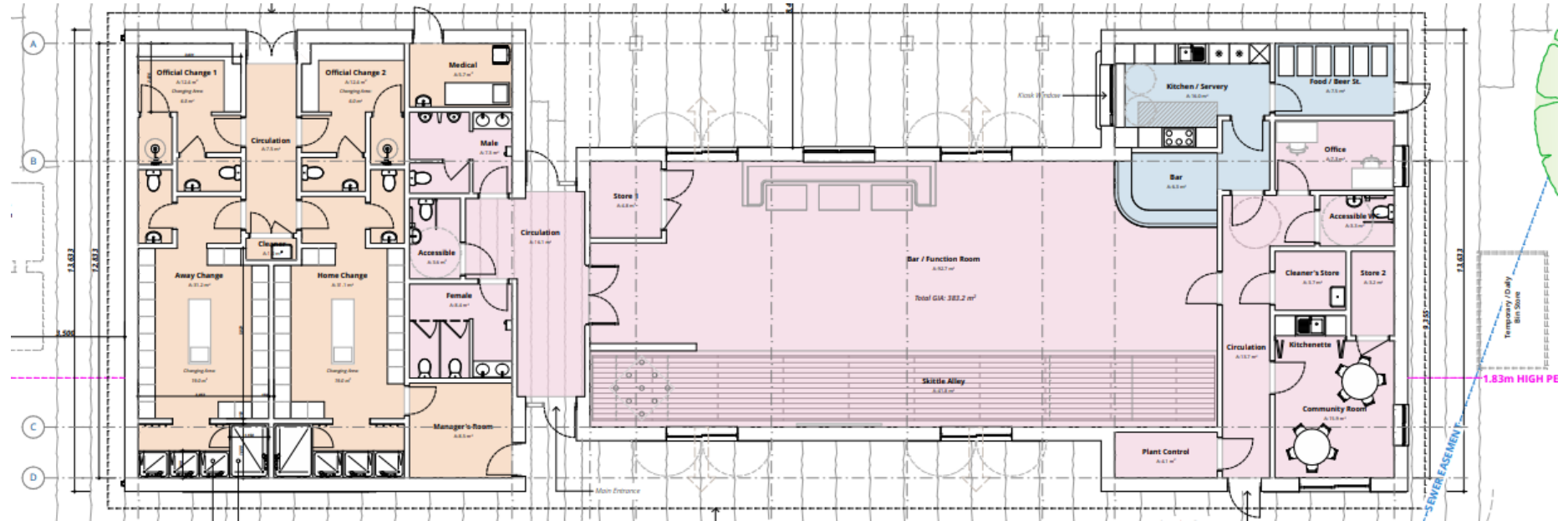
# Site location



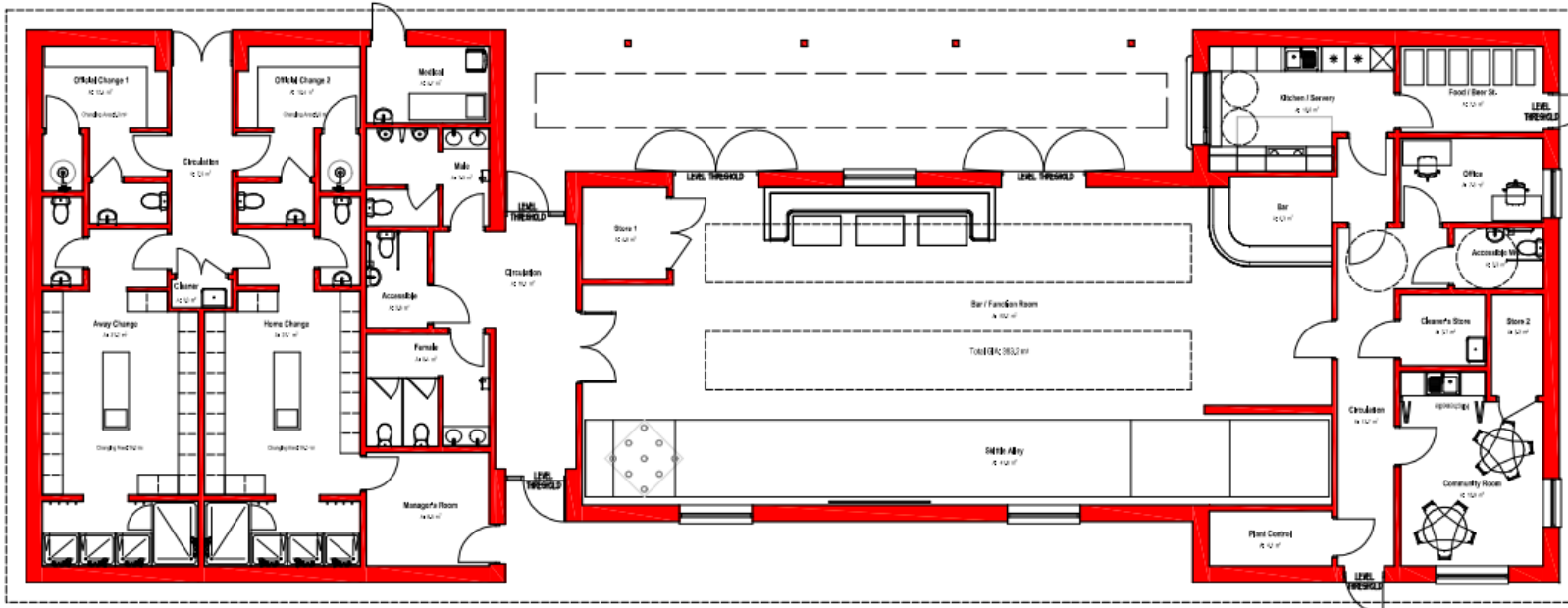
# Existing and proposed site plan



# Previously approved floor plan



# Proposed floor plan



There is no change to internal layout of the building



Previously approved elevations

E-01 - Pitch Side Elevation @ 1:100



E-02 - Park Side Elevation @ 1:100



Proposed elevations

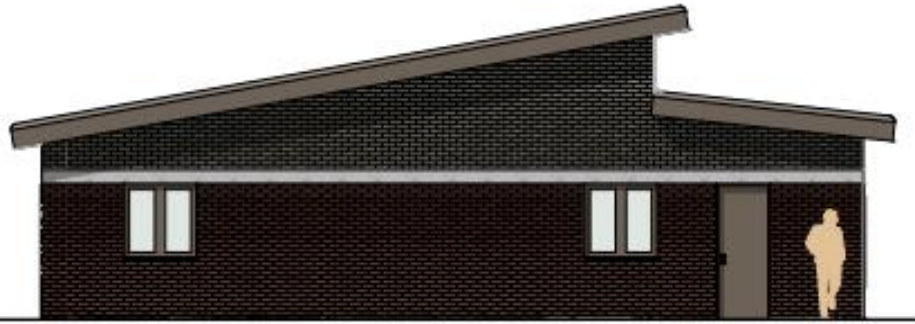
EAST ELEVATION



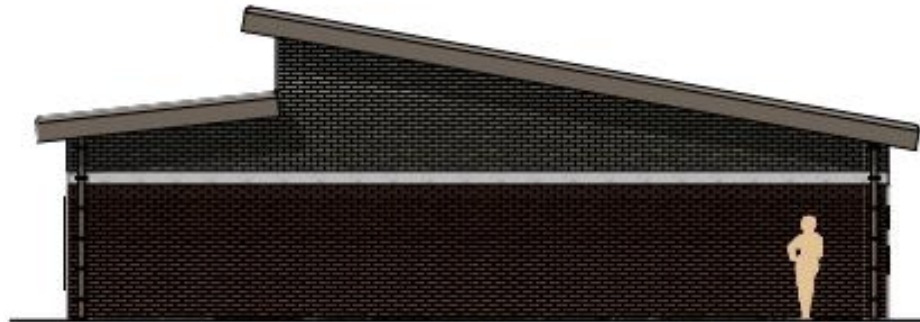
WEST ELEVATION

24/00407/CONDIT

## Previously approved elevations

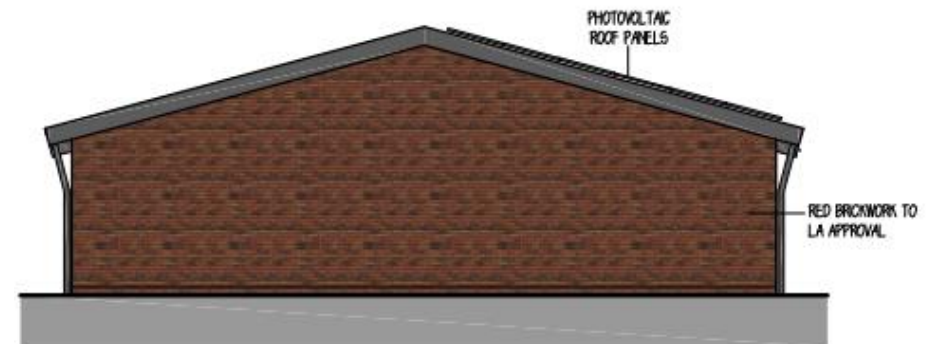


E-03 - South Elevation @ 1:100



E-04 - North Elevation @ 1:100

## Proposed elevations

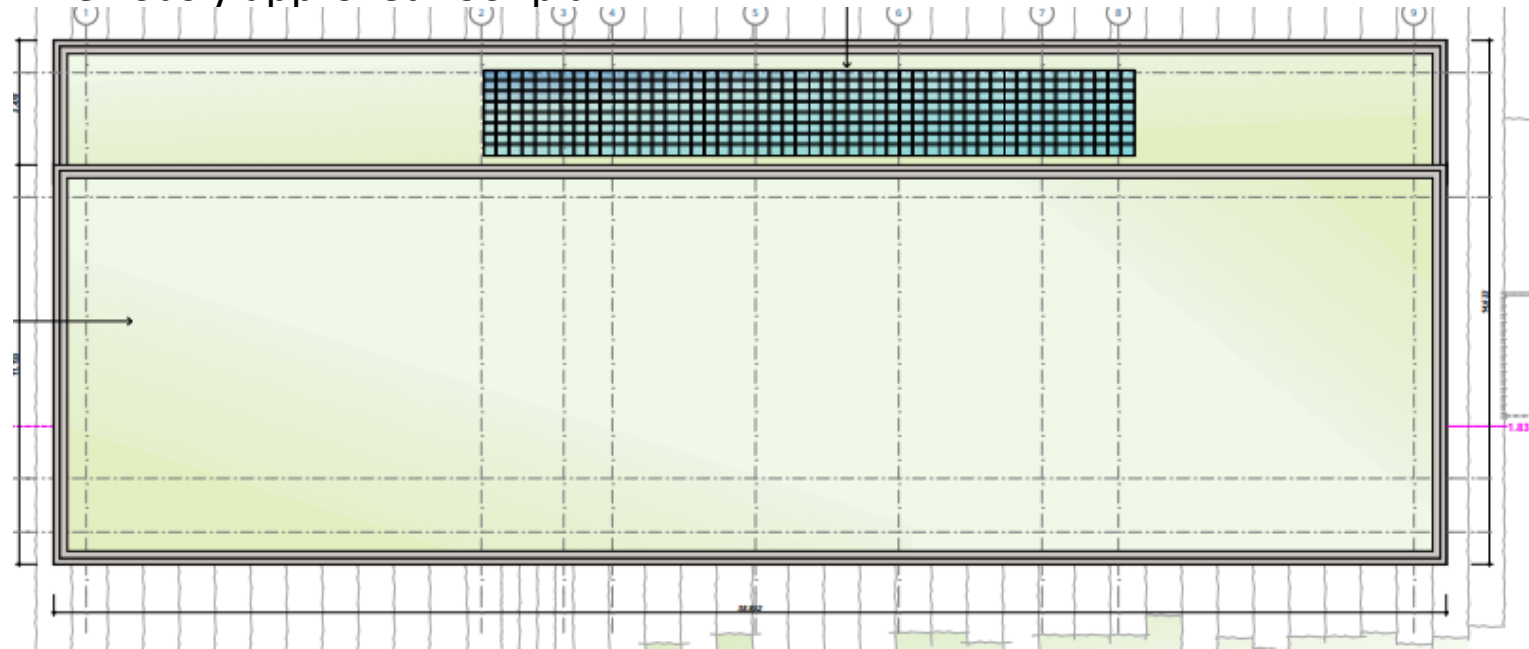


NORTH ELEVATION

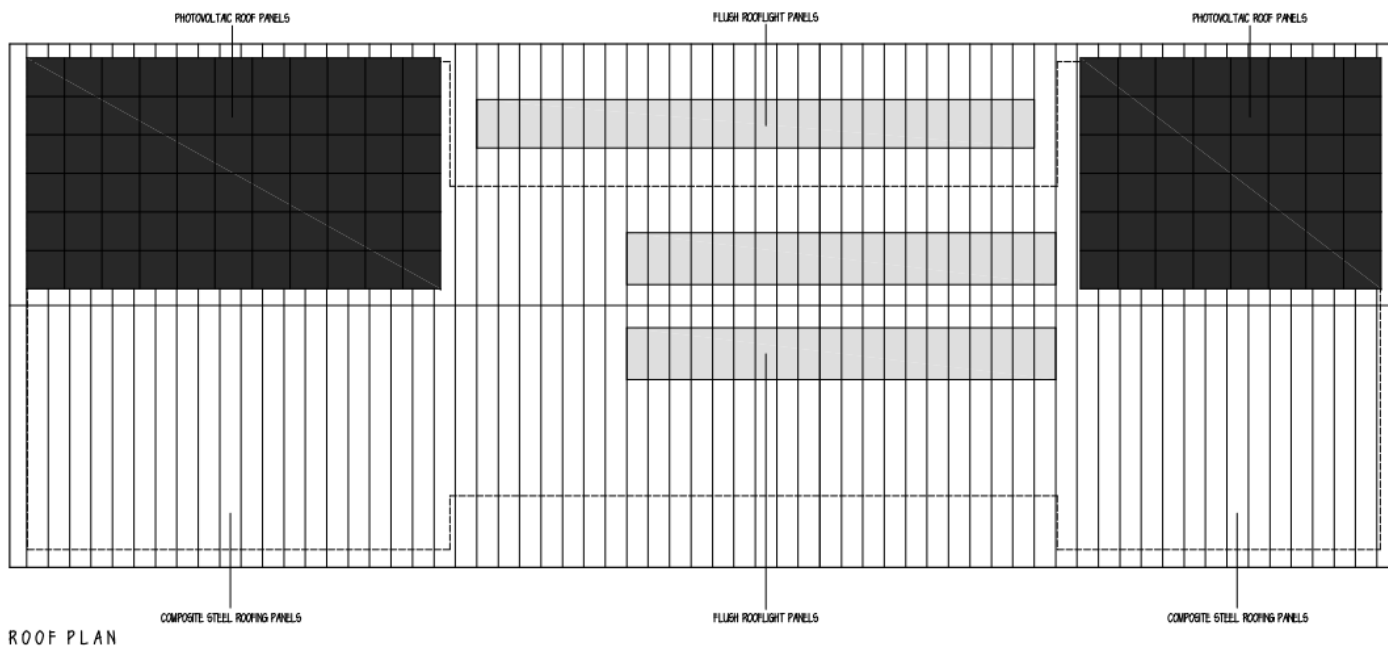
no change to footprint, reduction in height by 1.2 metres

24/00407/CONDIT

Previously approved roof plan



Proposed roof plan



# Site photos





Site photos



# Summary of variations

- Variation of Condition 2 – approved drawings - change to the design of the Community Sports Hub building,
- Remove Condition 3 – Material details,
- Remove Condition 4 – Green roof details,
- Remove Condition 5 – Construction Management Plan,
- Remove Condition 6 – Sustainable Drainage, and
- Remove Condition 9 – Contaminated Land – site survey

Of approved planning permission ref. 22/01743/FUL

# Considerations

- The acceptability of the proposed changes to the design of the community sports hub building, and
- The acceptability of the information and details submitted to address conditions 3 (materials), 5 (construction management plan) and 6 (sustainable drainage) of the previously approved application.

# Recommendation to permit subject to conditions:

- Time
- Approved drawings
- Materials (in accordance with submitted details)
- Construction management plan (in accordance with submitted details)
- Sustainable drainage (in accordance with submitted details)
- Submission of landscaping scheme
- Replacement trees,
- Contaminated Land – site survey,
- Hours of activity,
- Lighting